



## **SCENARIA View**

**SUPERB  
LOW DOSE CT**

**the next level in computed tomography imaging**

# Efficiency

Experience enhanced workflow speed and clear CT image quality across a wide range of applications using 64 slice acquisition and up to 128 slice reconstruction.

Access the latest dose awareness, reduction and management features.\* Benefit from more open patient access, a compact footprint, new energy efficient technologies and lower cost of ownership with FUJIFILM SCENARIO View.

With the SCENARIO View **the next level** in CT is here.

- Powerful 84kw generator
- Fast workflow
- Advanced dose reduction capabilities\*



- Long 200cm scannable range
- Enlarged 80cm aperture
- Lateral shift table +/-10cm shift
- Higher weight capacity table, up to 250kg
- Compact design, 18.5 m<sup>2</sup> minimum scan room

\* In clinical use, dose saving features may reduce CT patient dose depending on the clinical task, patient size, anatomical location and clinical practices employed.

## FUJIFILM's landmark design

FUJIFILM created the SCENARIO View with practical innovations that better address the pressing needs of patients and the majority of CT providers for both their in and out patient services. Versatile and patient friendly, SCENARIO View is built on more than 40 years of experience in computed tomography and more than 14'000 systems.

## Computed tomography's history

CT was first presented in 1972 at the British Institute of Radiology Meeting. The first EMI CT systems took nearly 10 minutes to scan and reconstruct each thick grainy slice using a primitive computer with other vacuum tube electronics. And CT imaging then was only possible for the top portion of the head.

CT has advanced over nearly 50 years, technically and clinically, in a "Moore's Law" like fashion that equals computer capability advances. Numerous CT performance improvements have occurred that exceed 1 billion fold.\*

In those same 50 years healthcare delivery has also transformed to better serve patients with heightened emphasis on diagnostic speed and accuracy together with powerful patient experience and cost management drivers. CT has played a vital role in this transformation.

With FUJIFILM's core commitment to innovating healthcare, FUJIFILM developed SCENARIO View to be not just another "NEW" model, but rather, a powerful product achievement that addresses the needs of the majority of CT providers. SCENARIO View sets a high benchmark for dose reduction\*, image quality, versatility, reliability and affordability.

\* Radiology Volume 273 Number 2 (Suppl) November 2014 radiology.org

# CT's History



Original H-CT model circa 1977



# Quality

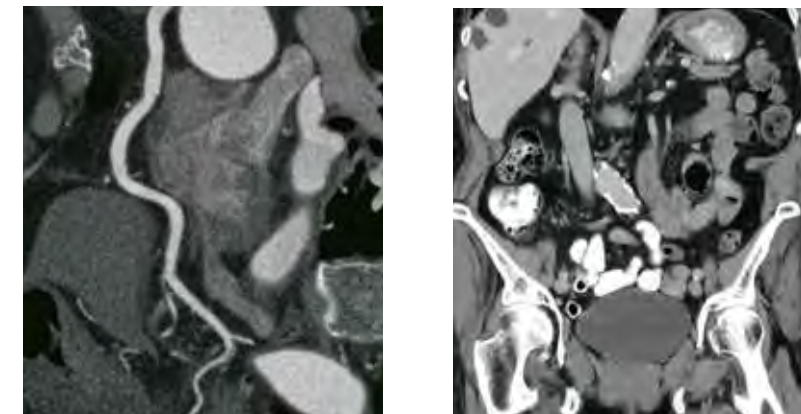
SCENARIO View is an outstanding CT for all kinds of radiology departments and outpatient centers that delivers a unique synergy of:

- High image quality with lower dose\*
- Versatility
- Affordability
- Reliability

## High image quality & workflow

SCENARIO View employs 64 discrete detector/electronics channels over 40mm detector coverage for rapid true 64 slice thin-slice imaging and reconstructs up to 128-slices per scan rotation.

Sub-millimeter slice capabilities optimize finely detailed images for small lesion and vessel assessment, while metal artefact reduction capabilities enable orthopedic exams without objectionable metal induced artefacts.



## Versatile capabilities

SCENARIO View is a powerful premium performance CT solution providing high image quality and dependable routine application capabilities with advanced clinical application options available for:

- 80mm axial and 120mm helical coverage shuttle scan for perfusion exams
- Calcium scoring and advanced cardiac CTA
- Interventional needle guidance
- Dual energy exams
- Available advanced 3D visualization servers and 2<sup>nd</sup> console options

\* In clinical use, dose saving features may reduce CT patient dose depending on the clinical task, patient size, anatomical location and clinical practices employed.



# Advanced



80cm gantry aperture

## Innovative view advantages

SCENARIO View is an outstanding workhorse product in every regard and differentiates itself vs. competing systems with important design and performance advantages.

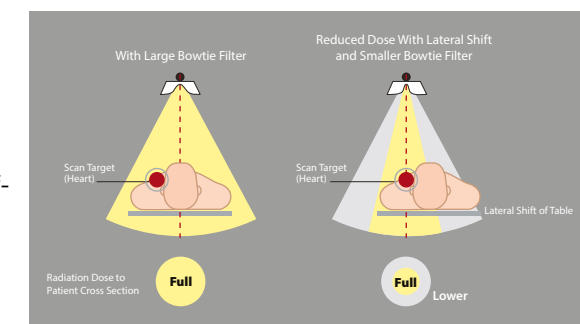
## Superior access and scan capability for obese and tall patients

SCENARIO View provides excellent bariatric (and tall) patient capabilities by combining a standard 250kg table weight capacity, an enlarged 80cm gantry aperture, a more powerful 84kW Generator, providing up to 700mA operation and the multiple benefits of an automated lateral shift table. Its table also provides extended coverage of up to 200cm to be able to scan a full patient length.

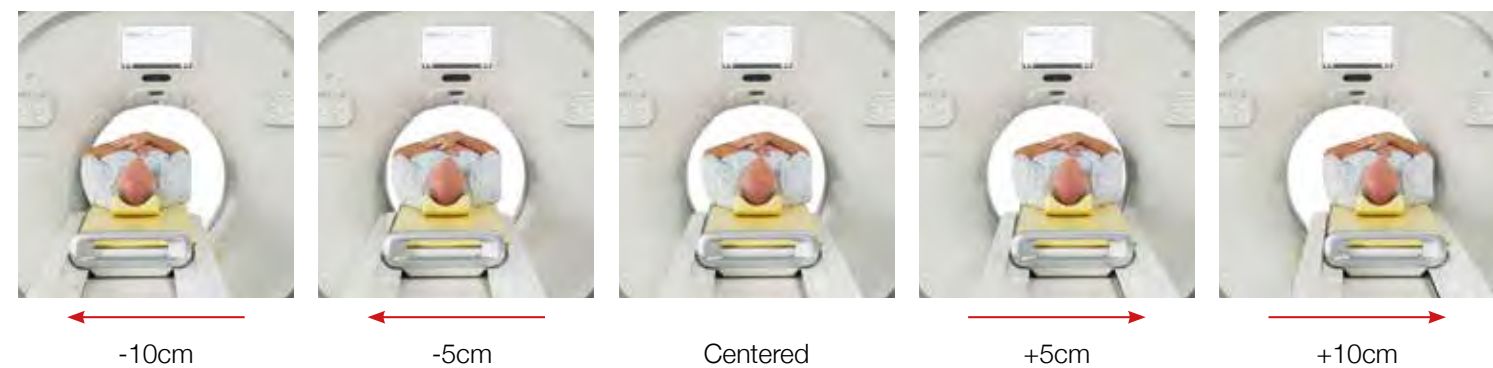
## Lateral shift table

Advantages of the standard auto lateral shift table that enables  $\pm 10\text{cm}$  lateral shift (20cm total shift range) include providing easier and more accurate positioning of the patient's anatomy of interest at the scan field of view's isocenter where spatial resolution can be better than off-center. And, used together with the scanner's small bow-tie filter dose can be reduced vs. a non-centered patient.

Larger bow tie filter required for larger FOV coverage of off-center scan target



Smaller bow tie filter used with lateral shifting table for smaller FOV and thus significantly reduced dose





# Technology

## Key technologies

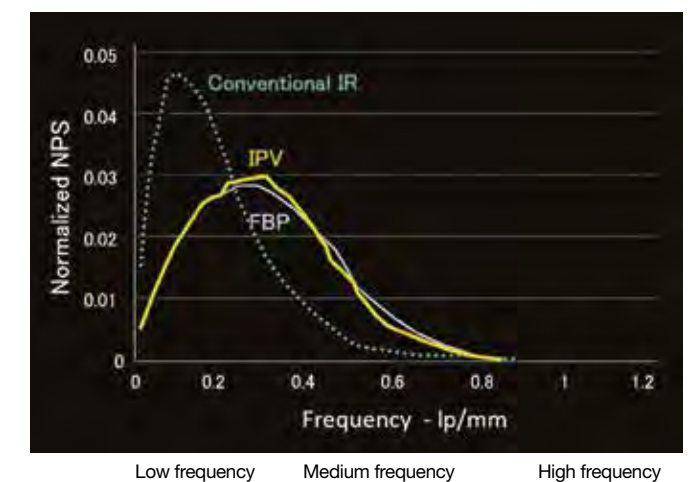
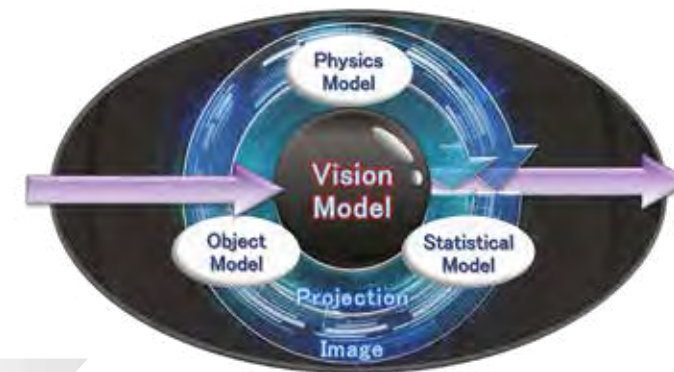
SCENARIO View's enhanced clinical performance is driven by numerous technological advances that FUJIFILM has refined to create an outstanding CT System.

### More spacious and patient friendly open 80cm gantry aperture

By exceeding the aperture dimensions of other 64/128-slice radiology CT systems SCENARIO View facilitates easier access for larger patients to meet this daily clinical challenge and improves every patient's exam experience.

### IPV – Iterative reconstruction

IPV is FUJIFILM's next-generation "vision modeled" iterative processing that overcomes a conventional IR weakness by maintaining normal image texture that better matches the Noise Power Spectrum (NPS) of IPV to conventional Filtered Back Projection (FBP).



### HiVision detector

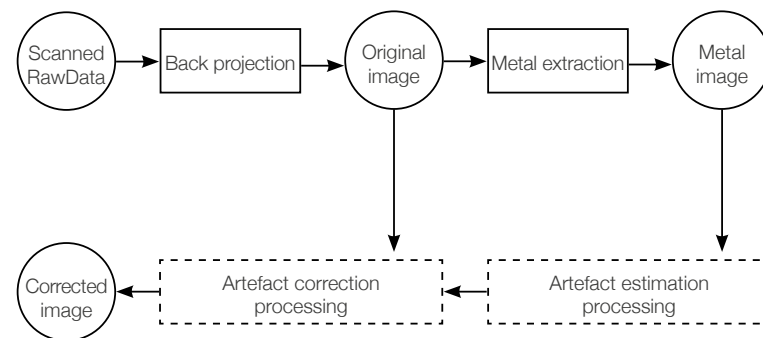
To further enhance image contrast detectability SCENARIO View's new HiVision detector integrates digital signal processing within each detector module to minimize electronic noise in the acquired attenuation data, improve sub-system reliability and create a more efficient design.

HiVision reduces electronic noise by 25%, power consumption by 35% and weight by 14%.

## Key technologies

### HiMAR Plus - metal artefact reduction

HiMAR Plus enables orthopedic exams without objectionable metal induced artefacts, by correction of raw data.



Before HiMAR Plus



After HiMAR Plus

### Automated cardiac

SCENARIO View's advanced optional cardiac package provides automated features to ensure optimal pre-scan protocol selection and post-scan selection of the most informative cardiac phase images for enhanced clinical results and workflow. With available prospective step & shoot and retrospective dose-modulated ECG gated acquisition, SCENARIO View ensures high quality study results for a wider range of patients.

### Compact design

Building upon FUJIFILM's expertise as a leading micro-electronic designer, SCENARIO View makes efficient use of limited room space and is comprised of only 3 system modules: the gantry, table and operator's console. There are no other CT system cabinets, enabling the View to fit into spaces that are smaller than previous CT designs.



### Eco friendly

With consideration for minimum resource usage, SCENARIO View incorporates eco-mode that can reduce power consumption by up to 70% during non-use shifts with programmable predetermined wake-up and warm-up time.

### Advanced 3D visualization capabilities

SCENARIO View is compatible with a wide range of optional advanced 3D visualization server solutions and can be seamlessly embedded in your current information network. And, FUJIFILM offers market leading 3D visualization solutions that can enhance the tools you use today.

# Comfort





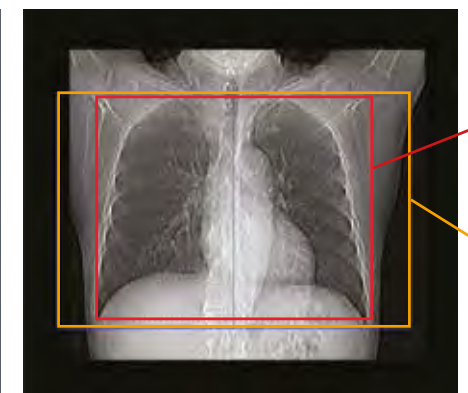
# Excellence

## Ease of use

With SynergyDrive enhanced workflow, SCENARIO View dramatically reduces examination time by automating and shortening the operator's procedure steps. AutoPose, using an automated algorithm, automatically suggests the scan range and dimension based on protocol and patient's size observed during the scanogram (Scout) scan.



AutoPose setting screen



Automatic  
recognition  
of region

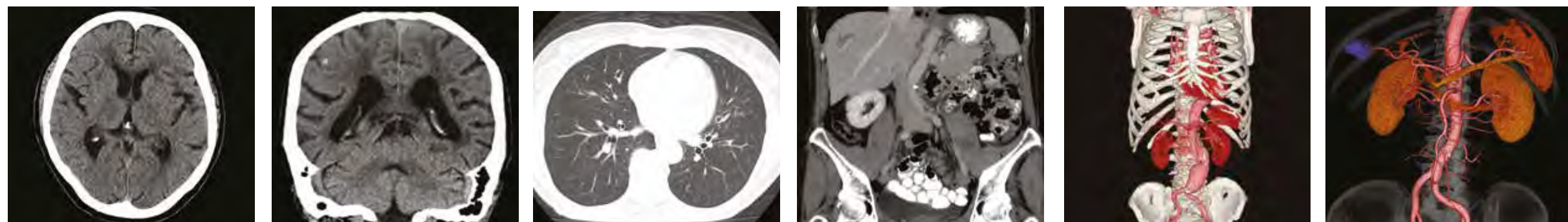
Margin  
setting

Region auto selected

## Broad clinical applications

SCENARIO View includes a wide range of customizable adult and pediatric protocols for lower dose acquisition.

FUJIFILM's patient focused philosophy is built into SCENARIO View. Its leading dose reduction and awareness features put the patient first without compromising image quality.





### Unmatched customer support

SCENARIO View is backed by FUJIFILM's unmatched support capabilities including, comprehensive in-service training, scheduled applications revisits during warranty & full service contract period.

### Seamless site planning and installation

With a smaller gantry/table footprint, SCENARIO View is the ideal choice for replacing your older CT with little or no reconfiguration of room space. You can depend on your FUJIFILM site planning expert to be there and guide you every step of the way.

### On-site training

FUJIFILM gives you a great deal of help and support with dedicated application training\* to ensure you get the most out of your MR, CT and Ultrasound systems. Our training is thorough, yet concise; we also make sure your technologists keep current with the latest developments and enhancements.

FUJIFILM applications specialists also provide an independent review of your images prior to submission to help ensure basic image quality and adherence to parameter guidelines. Our on-site facility training programs are continually revised so that the latest dose reduction strategies and best operating practices are always at the forefront of your CT experience.

### Sentinel™ remote service

Your warranty and service contract comes with remote service support including diagnostics, image review, raw data analysis, read error messages, monitor operating parameters and more.

# Support



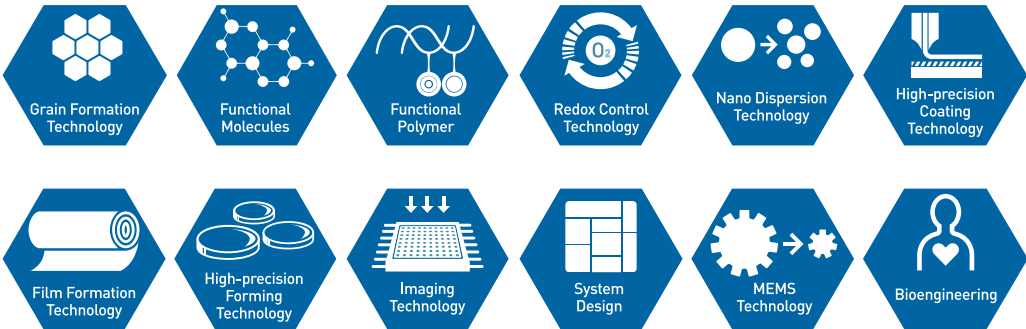
### Innovating for a healthier world

FUJIFILM transformed its corporate structure for growth by expanding beyond the traditional photographic film business to six priority business fields, including healthcare – ranging from diagnostic imaging to regenerative medicine.

Our R&D innovations over the decades find us today with highly specialized expertise in increasingly relevant technologies that inform modern healthcare.

For over 80 years FUJIFILM has continually invested in research and development resulting in world-class, highly versatile fundamental core technologies. These technologies and knowledge were accumulated in the photographic film business. Today this expertise allows FUJIFILM to design and innovate new products and services for diverse businesses that will shape the future for FUJIFILM. We describe this birth of new applications and technologies from FUJIFILM's extraordinary background of innovation as leveraging fundamental core technologies.

#### CORE TECHNOLOGIES

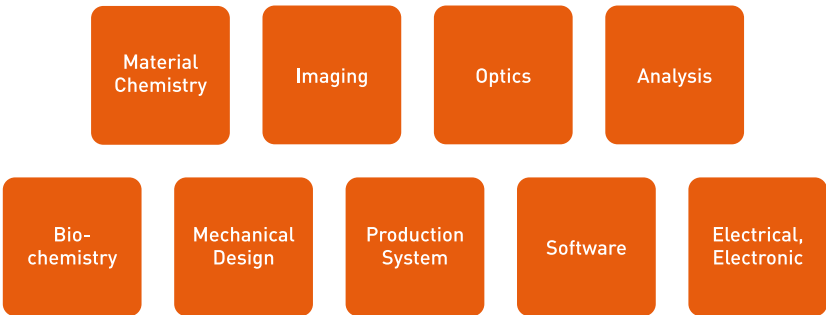


Established in  
**1934**

Companies worldwide  
**310\***

Employees worldwide  
**> 73.000\***

#### FUNDAMENTAL TECHNOLOGIES



All of these diagnostic and therapeutic technologies form a highly connected, holistic approach to healthcare, with the goal of helping patients along the entire care pathway, from the earliest diagnosis right through to the development of new regenerative treatments.



\* As of March 31, 2021





# SCENARIO View

- SCENARIO View is a registered trademark or trademark of FUJIFILM Healthcare Corporation in Japan and other countries.
- This brochure may contain descriptions of optional functions and products.
- Specifications and physical appearance may change without prior notice.
- Please refer to the operation manual and the related documents for appropriate use of this product.

**FUJIFILM**

---

Manufactured and distributed by  
**FUJIFILM Healthcare Corporation**  
2-1 Shintoyofuta, Kashiwa-shi, Chiba, 277-0804, Japan  
[www.fujifilm.com/fhc/en](http://www.fujifilm.com/fhc/en)

---

Distributor for Europe  
**FUJIFILM Healthcare Europe Holding AG**  
Sumpfstrasse 13, 6312 Steinhausen, Switzerland  
[www.fujifilm.com/hce](http://www.fujifilm.com/hce)

SCENARIO View-FF/EU-Version/EN, 07/2021/v1/NIK